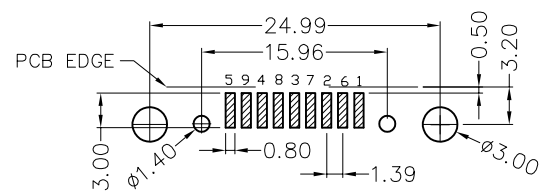
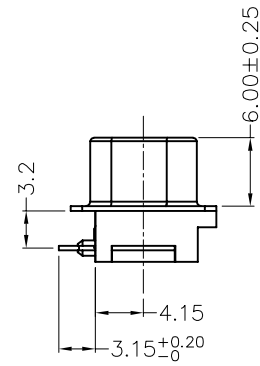
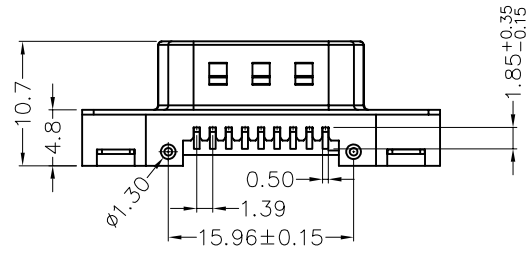
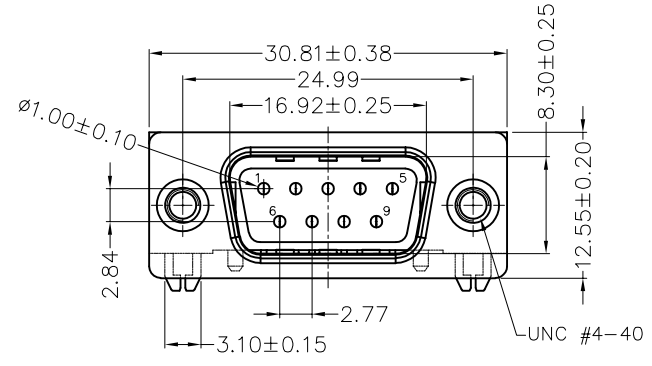


REV	LOCATIONS	DESCRIPTION	DATE	REVISER	APPD



**Recommended P.C.Board Layout**  
General tolerances: ±0.05

**SPECIFICATION**

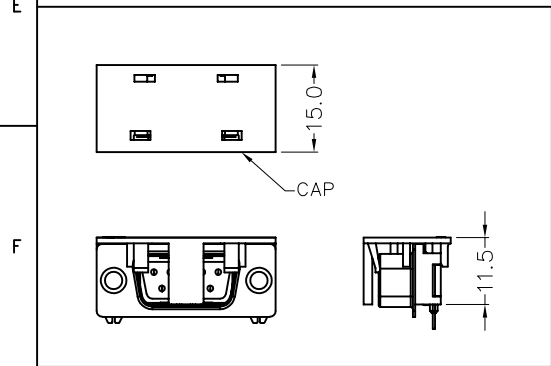
**Electrical**  
 Current Rating: 3A  
 Voltage Rating: 250V  
 Contact resistance: 25 mΩ Max  
 Insulation resistance: 1000 MΩ Min. at 500V DC  
 Dielectric Withstanding Voltage :500V AC r.m.s Min  
 Temperature Range-Operating: -55°C ~ +105°C

**Material and Plating**  
 Insulator: LCP (UL94 V-0) Black  
 Contact: Brass/ Selective gold plated on contact area and matte tin plated on tails area  
 Shell: SPCC/ Nickel plated  
 Board lock: SPCC/ Tin plated on solder tails, Nickel underplated overall

**Ordering Information**

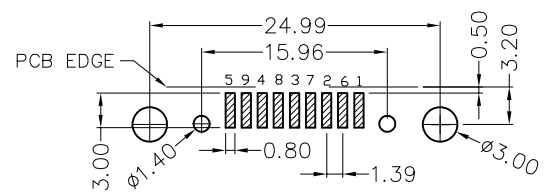
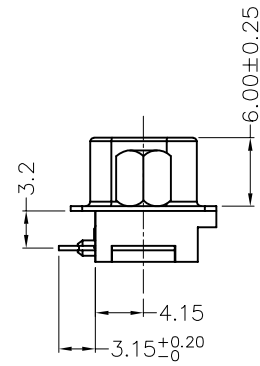
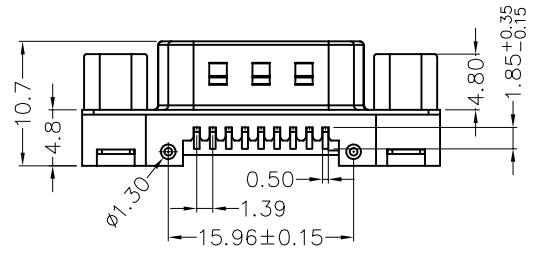
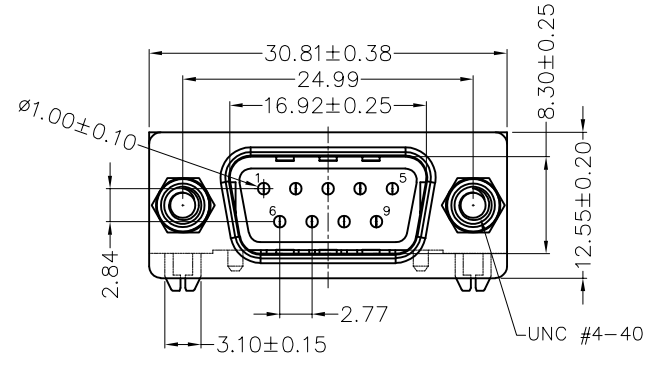
FDB 09 38 — M0 S B 7 XX BK X A  
 1 2 3 4 5 6 7 8 9 10 11

1	Category FDB- D-SUB connector	2	Circuits 09	3	Distinction No. 38	4	Type MO-Male	5	Assembly Layout S-SMT	6	Entry Angle B-90° Angle
7	Plating 7-Selective gold plated on contact area and matte tin plated on tails area	8	Thickness of Plating 00-Gold flash 03-3μ" Custom plate available	9	Color-Resin BK-Black	10	Packaging M-Reel K-Tray	11	Distinction Type A-A Type		



<p>THIRD ANGLE PROJECTION</p>	GENERAL TOLERANCES (UNLESS SPECIFIED) X. ±0.30 X.' ±5' X.X ±0.20 X.X' ±2' X.XX ±0.15 X.XX' ±1' X.XXX ±0.10 X.XXX' ±0.5'		APPROVE BY FRANK	DATE 02/APR/20	PART NO. FDB0938-M0SB7XXBKXA	ITEM NO. FDB0938	<p>Leader Of Industry</p>
	DESIGN UNITS Metric	CHECKED BY CHERRY	DATE 02/APR/20	TITLE D-SUB connector 90° Angle Male		REV 0	
SCALE 5:1	SIZE A4	DRAWN BY KATE	DATE 02/APR/20	THIS DRAWING CONTAINS INFORMATION THAT IS PROPRIETARY TO TXGA INDUSTRIAL ELECTRONICS(S.Z)CO.,LTD AND SHOULD NOT BE USED WITHOUT WRITTEN PERMISSION			

REV	LOCATIONS	DESCRIPTION	DATE	REVISER	APPD



**Recommended P.C.Board Layout**  
General tolerances: ±0.05

**SPECIFICATION**

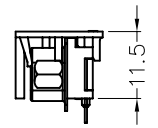
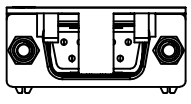
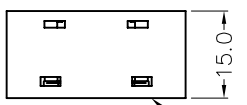
**Electrical**  
 Current Rating: 3A  
 Voltage Rating: 250V  
 Contact resistance: 25 mΩ Max  
 Insulation resistance: 1000 MΩ Min. at 500V DC  
 Dielectric Withstanding Voltage :500V AC r.m.s Min  
 Temperature Range-Operating: -55°C ~ +105°C

**Material and Plating**  
 Insulator: LCP (UL94 V-0) Black  
 Contact: Brass/ Selective gold plated on contact area and matte tin plated on tails area  
 Shell: SPCC/ Nickel plated  
 Board lock: SPCC/ Tin plated on solder tails, Nickel underplated overall  
 Screw: SPCC/ Nickel plated

**Ordering Information**

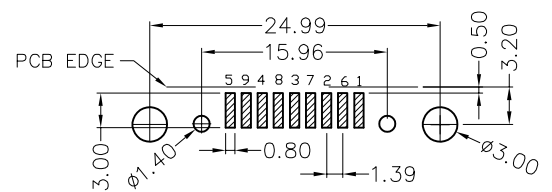
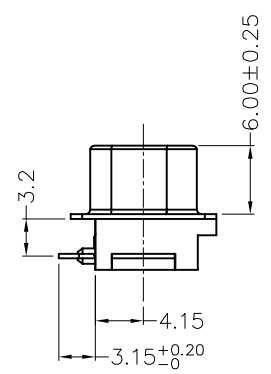
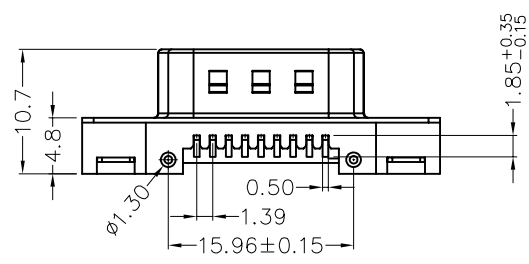
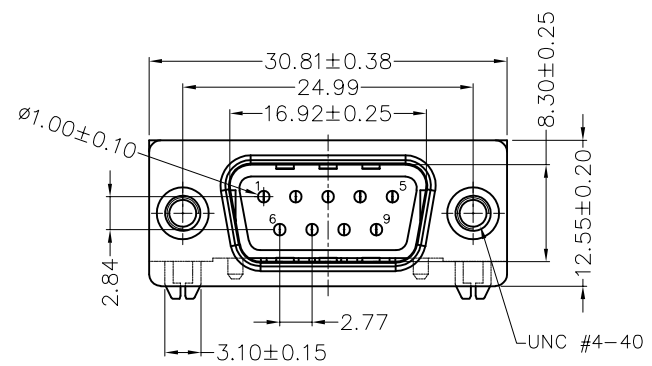
FDB 09 38 — M0 S B 7 XX BK X B  
 1 2 3 4 5 6 7 8 9 10 11

1	Category FDB- D-SUB connector	2	Circuits 09	3	Distinction No. 38	4	Type MO-Male	5	Assembly Layout S-SMT	6	Entry Angle B-90° Angle
7	Plating 7-Selective gold plated on contact area and matte tin plated on tails area	8	Thickness of Plating 00-Gold flash 03-3μ" Custom plate available	9	Color-Resin BK-Black	10	Packaging M-Reel K-Tray	11	Distinction Type B-B Type		



 THIRD ANGLE PROJECTION DESIGN UNITS Metric SCALE 5:1 SIZE A4	GENERAL TOLERANCES (UNLESS SPECIFIED) X. ±0.30 X.' ±5' X.X ±0.20 X.X' ±2' X.XX ±0.15 X.XX' ±1' X.XXX ±0.10 X.XXX' ±0.5'		APPROVE BY FRANK CHECKED BY CHERRY DRAWN BY KATE	DATE 02/APR/20 DATE 02/APR/20 DATE 02/APR/20	PART NO. FDB0938-M0SB7XXBKXB TITLE D-SUB connector 90° Angle Male	ITEM NO. FDB0938 THIS DRAWING CONTAINS INFORMATION THAT IS PROPRIETARY TO TXGA INDUSTRIAL ELECTRONICS(S.Z)CO.,LTD AND SHOULD NOT BE USED WITHOUT WRITTEN PERMISSION	 Leader Of Industry	REV 0 SHEET NO. 1/1
--	---	--	---	---	---	---	------------------------	---------------------

REV	LOCATIONS	DESCRIPTION	DATE	REVISER	APPD

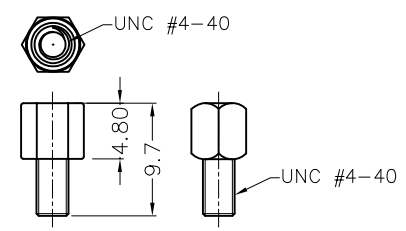


Recommended P.C.Board Layout  
General tolerances: ±0.05

**SPECIFICATION**

**Electrical**  
 Current Rating: 3A  
 Voltage Rating: 250V  
 Contact resistance: 25 mΩ Max  
 Insulation resistance: 1000 MΩ Min. at 500V DC  
 Dielectric Withstanding Voltage :500V AC r.m.s Min  
 Temperature Range-Operating: -55°C ~ +105°C

**Material and Plating**  
 Insulator: LCP (UL94 V-0) Black  
 Contact: Brass/ Selective gold plated on contact area and matte tin plated on tails area  
 Shell: SPCC/ Nickel plated  
 Board lock: SPCC/ Tin plated on solder tails, Nickel underplated overall  
 Screw: SPCC/ Nickel plated

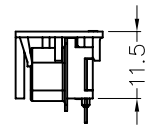
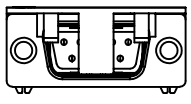
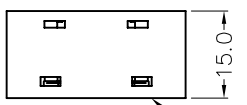


Screw (2pcs)

**Ordering Information**

FDB 09 38 — M0 S B 7 XX BK X C  
 1 2 3 4 5 6 7 8 9 10 11

1	Category FDB- D-SUB connector	2	Circuits 09	3	Distinction No. 38	4	Type MO-Male	5	Assembly Layout S-SMT	6	Entry Angle B-90° Angle
7	Plating 7-Selective gold plated on contact area and matte tin plated on tails area	8	Thickness of Plating 00-Gold flash 03-3μ" Custom plate available	9	Color-Resin BK-Black	10	Packaging M-Reel K-Tray	11	Distinction Type C-C Type		



 THIRD ANGLE PROJECTION	GENERAL TOLERANCES (UNLESS SPECIFIED)		APPROVE BY FRANK	DATE 02/APR/20	PART NO. FDB0938-M0SB7XXBKXC	ITEM NO. FDB0938	 Leader Of Industry	
	X. ±0.30	X.' ±5'	CHECKED BY CHERRY	DATE 02/APR/20	TITLE D-SUB connector 90° Angle Male			REV 0
DESIGN UNITS Metric	X.X ±0.20	X.X' ±2'	DRAWN BY KATE	DATE 02/APR/20	THIS DRAWING CONTAINS INFORMATION THAT IS PROPRIETARY TO TXGA INDUSTRIAL ELECTRONICS(S.Z)CO.,LTD AND SHOULD NOT BE USED WITHOUT WRITTEN PERMISSION			
SCALE 5:1	SIZE A4	X.XX ±0.15	X.XX' ±1'					
		X.XXX ±0.10	X.XXX' ±0.5'					

A

B

C

D

E

F

A

B

C

D

E

F